

Supporting information for the paper:

Lanthanum Telluride Nanowires: Formation, Doping and Raman Studies

A. K. Samal, and T. Pradeep*

DST Unit on Nanoscience (DST UNS), Department of Chemistry and Sophisticated Analytical Instrument

Facility, Indian Institute of Technology, Madras, Chennai 600 036 (India)

*Email: pradeep@iitm.ac.in, Fax: 91-44-2257-0545/ 0509.

Supporting information 1

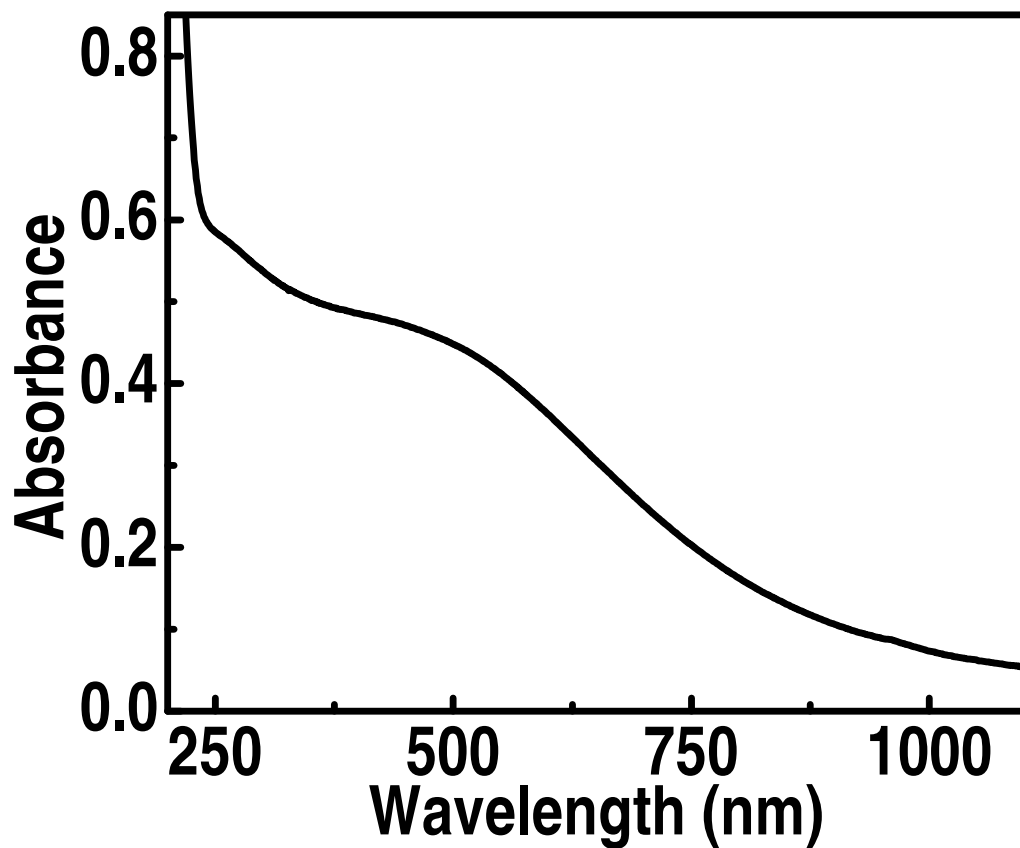


Figure S1. UV-visible spectrum of Ag-doped La₂Te₃ NWs.

Supporting information 2

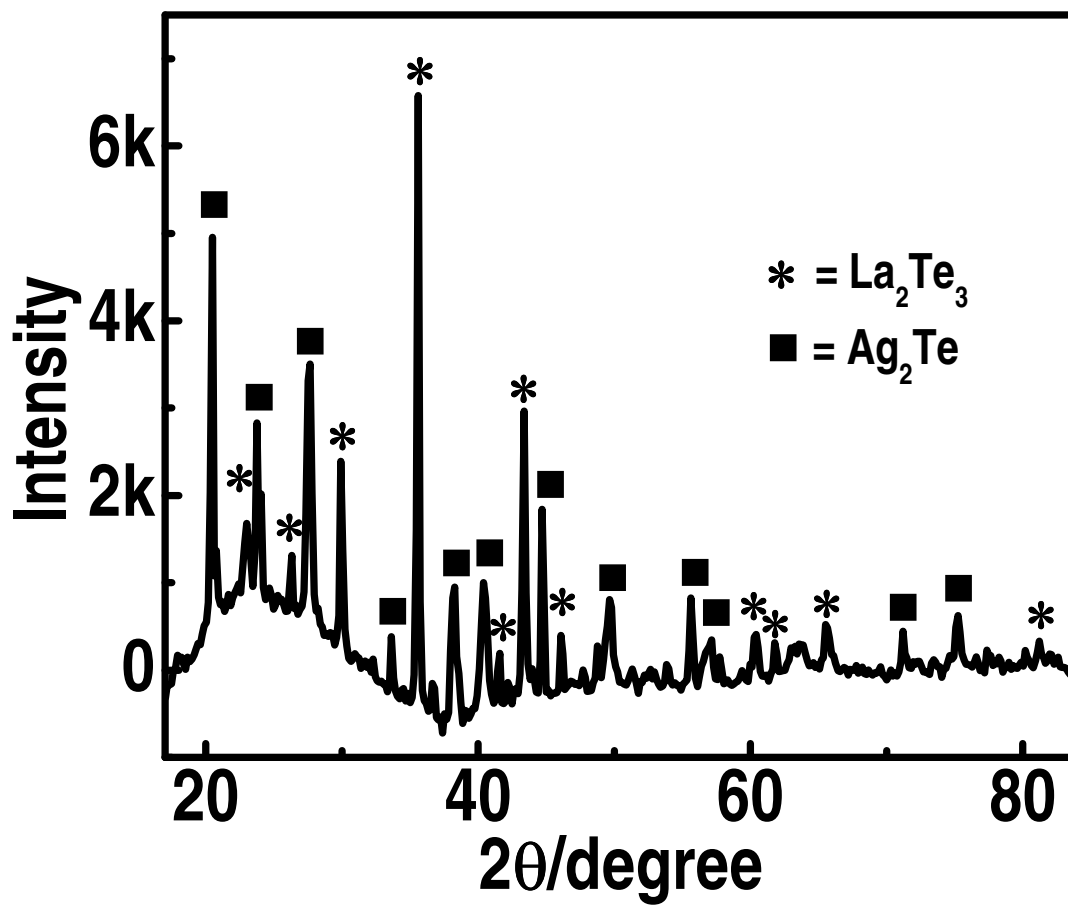


Figure S2. XRD pattern of Ag-doped La_2Te_3 NWs.

Supporting information 3

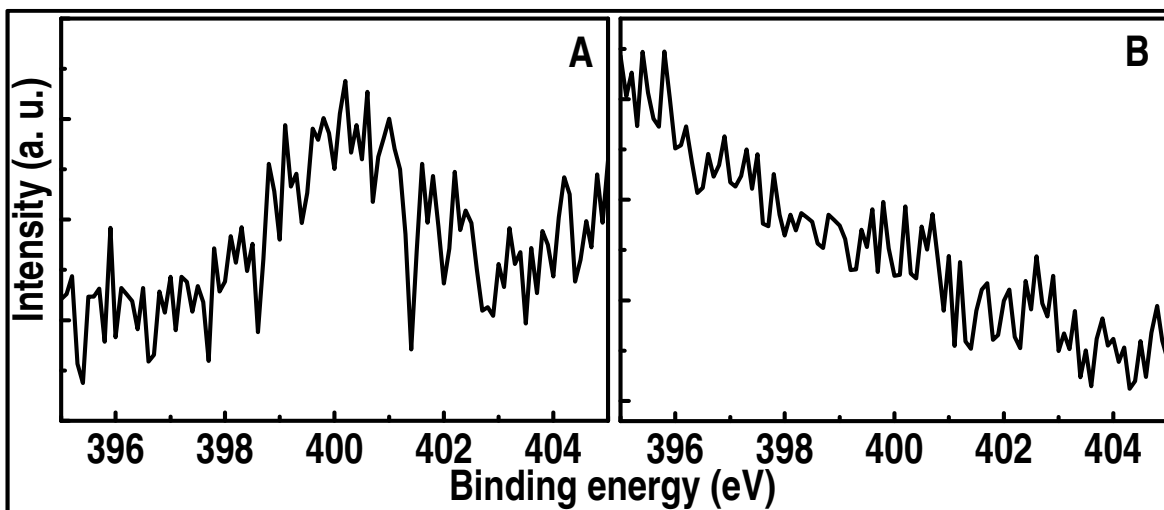


Figure S3. XPS spectra in the N 1s region of (A) La_2Te_3 NWs and (B) Ag-doped La_2Te_3 NWs.

Supporting information 4

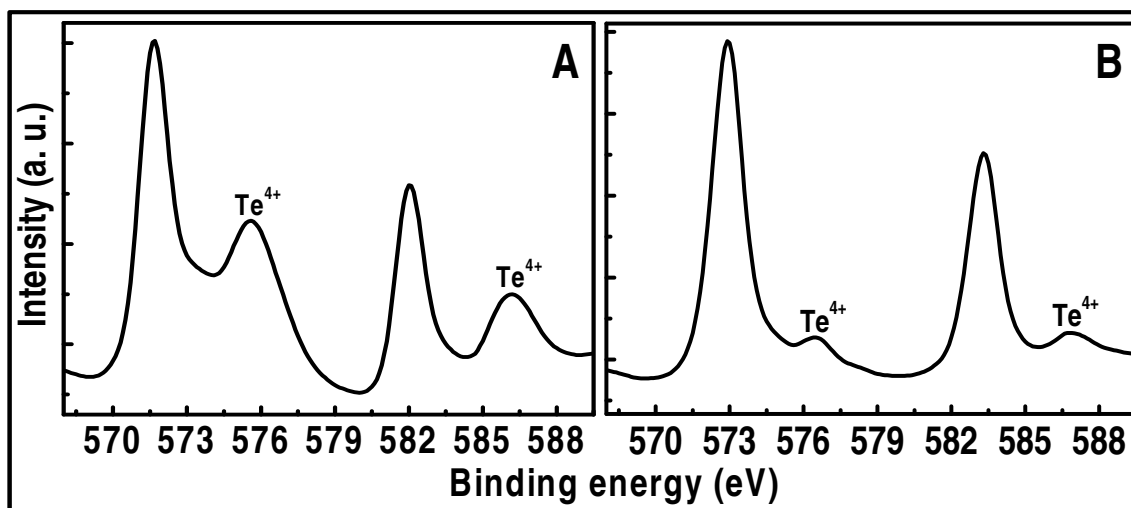


Figure S4. XPS spectra in the Te 3d region of (A) La_2Te_3 NWs and (B) Ag-doped La_2Te_3 NWs. The intensity due to Te^{4+} is reduced after Ag doping. Figure 5D is reproduced as spectrum A for easy comparison.